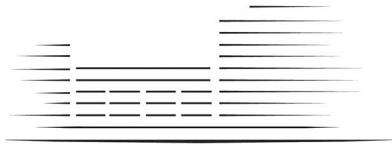


# LIGHTERMAN TOWERS



# CHELSEA ISLAND

## 2 BEDROOM APARTMENT

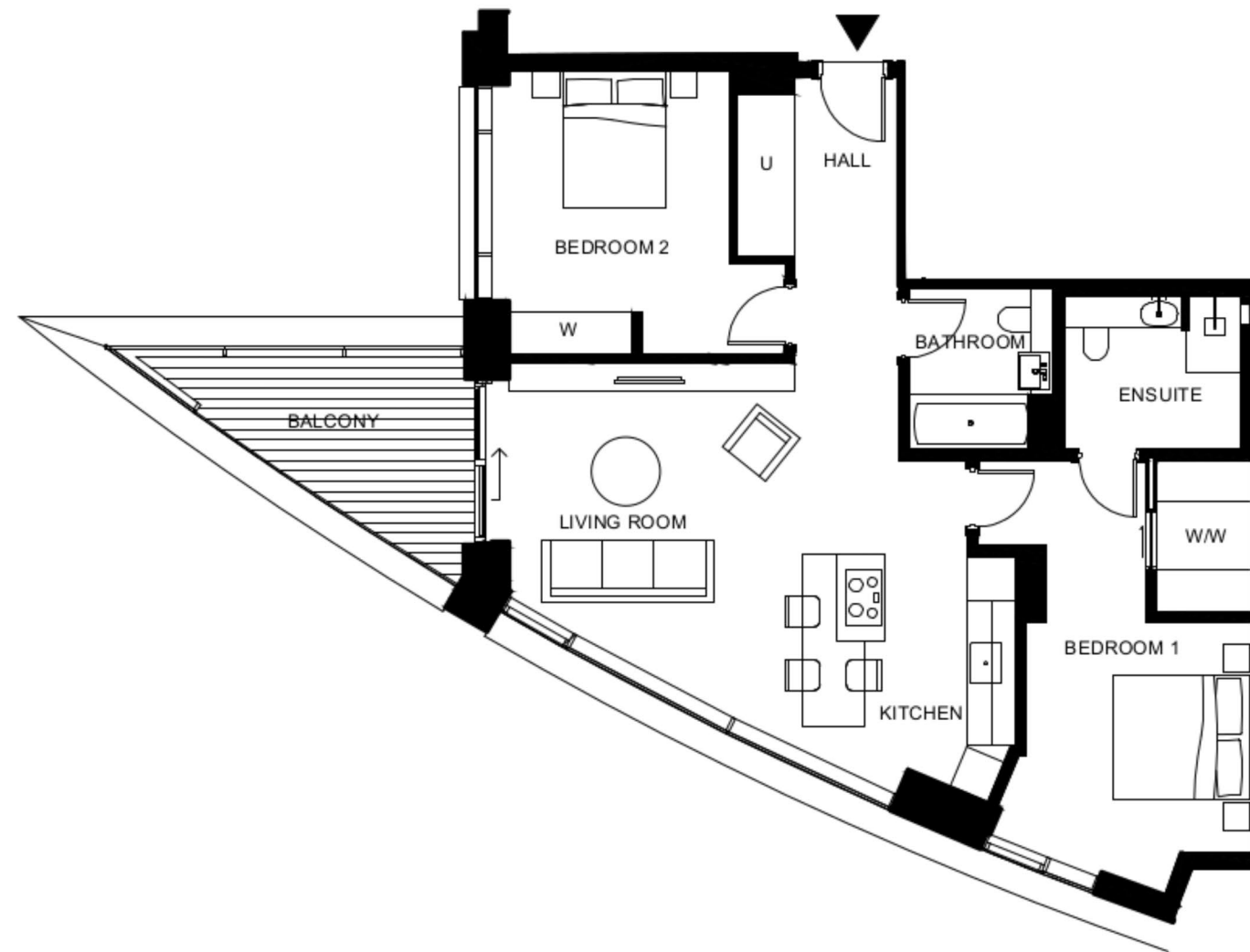
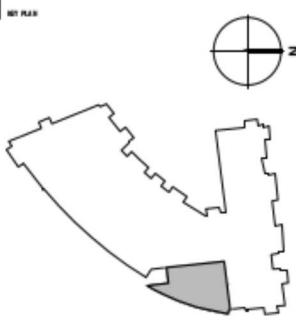
B.26 Level 2 (44)  
B.36 Level 3 (51)

Total Gross Internal Area = 1024 sq.ft. / 95 m<sup>2</sup>

Bedroom 1 = 13'-12'-5" / 4.0 x 3.8m

Bedroom 2 = 13'-6" x 11'-5" / 4.1 x 3.5m

Living/Kitchen = 24'-3" x 20'-7" / 7.4 x 6.3m



KEY:  
C Cupboard  
U Utility Cupboard  
W Fitted Wardrobe  
WW Walk in Wardrobe

THESE DRAWINGS ARE FOR MARKETING PURPOSES ONLY.  
FINAL LOCATION AND SET-OUTS TO BE CONFIRMED  
DURING CONSTRUCTION PHASE.

FOR INFORMATION ONLY  
NOT FOR CONSTRUCTION

Notes:  
Measurements are the maximum room dimensions.  
Floor layouts are subject to change at any time.  
These drawings are for marketing purposes only