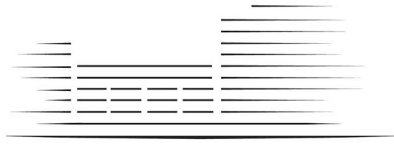


LIGHTERMAN TOWERS



CHELSEA ISLAND

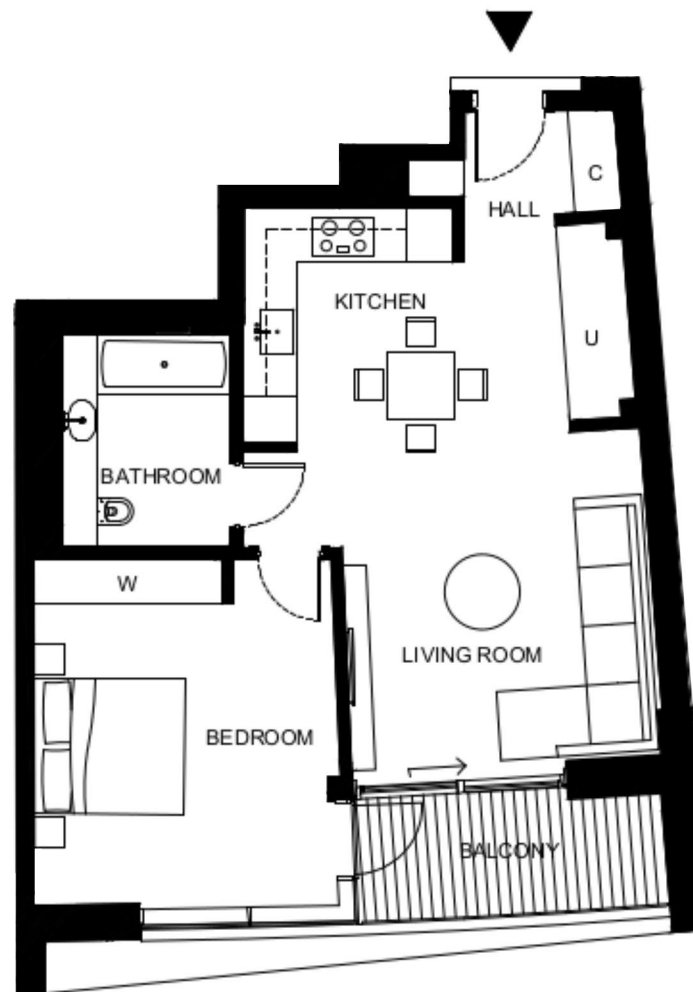
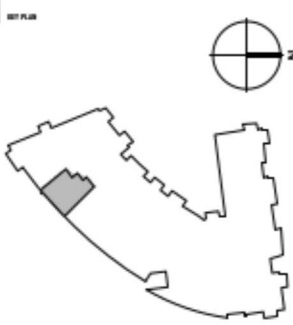
1 BEDROOM APARTMENT

- C.16 Level 1 (6)
- C.26 Level 2 (12)
- C.36 Level 3 (19)

Total Gross Internal Area = 726 sq.ft/ 67m²

Bedroom = 15'-3" x 13'-3" / 4.7 x 4.0m

Living/Kitchen = 25'-1" x 17'-6" / 7.6 x 5.3m



- KEY:
- C Cupboard
 - U Utility Cupboard
 - W Fitted Wardrobe
 - WW Walk in Wardrobe

THESE DRAWINGS ARE FOR MARKETING PURPOSES ONLY.
FINAL LOCATION AND SET-OUTS TO BE CONFIRMED
DURING CONSTRUCTION PHASE.

FOR INFORMATION ONLY
NOT FOR CONSTRUCTION

Notes:
Measurements are the maximum room dimensions.
Floor layouts are subject to change at any time.
These drawings are for marketing purposes only