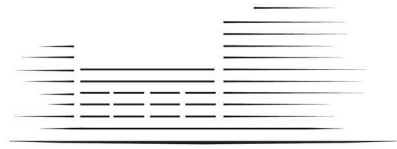


LIGHTERMAN TOWERS



CHELSEA ISLAND

3 BEDROOM APARTMENT

B.92 Level 9 (76)

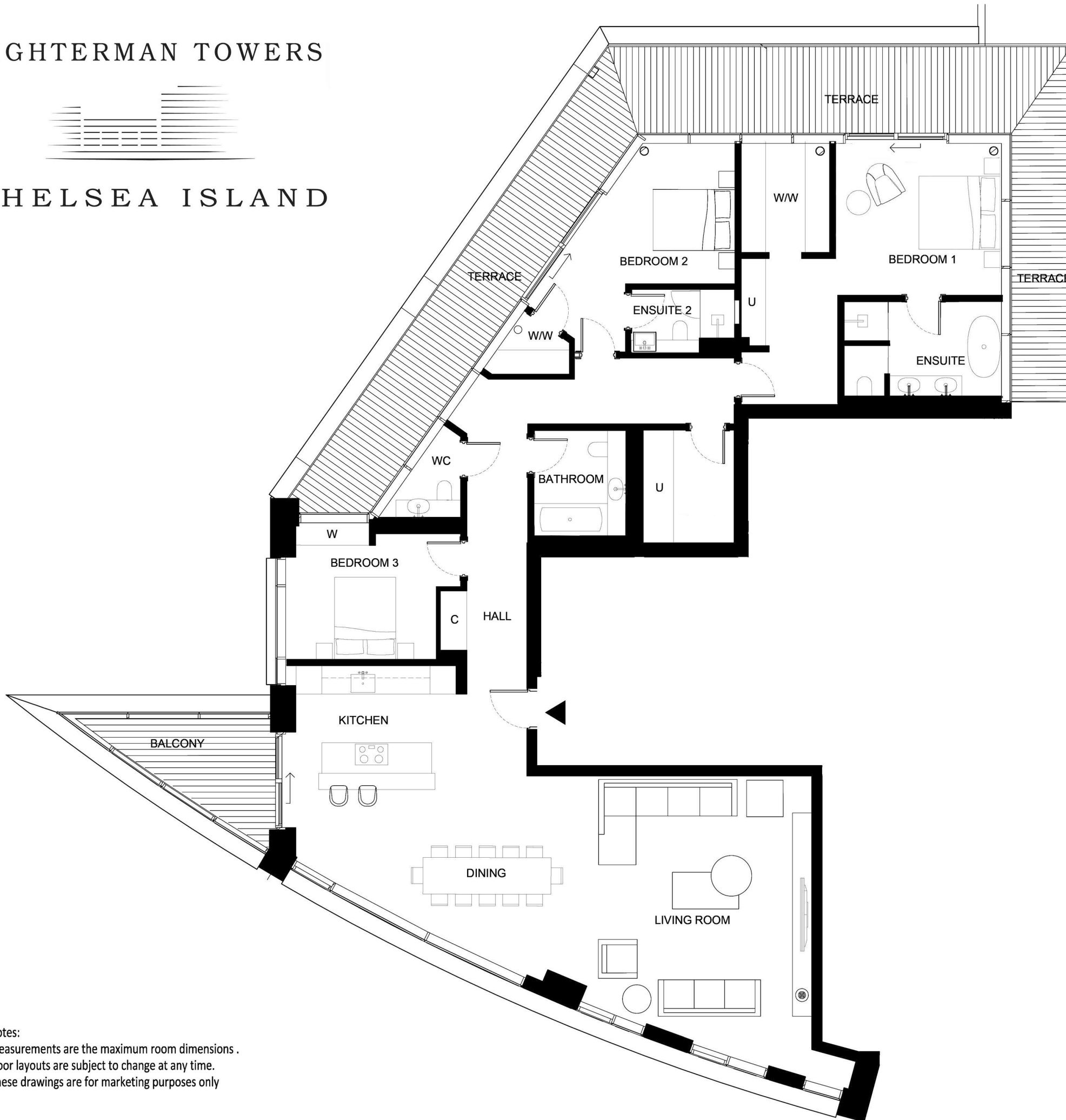
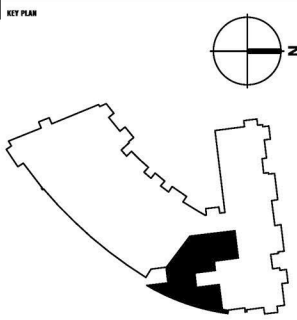
Total Gross Internal Area = 2146 sq.ft. / 199 m²

Bedroom 1 = 13'-5" x 12'-6" / 4.1 x 3.8m

Bedroom 2 = 15'-4" x 11'-4" / 4.7 x 3.8m

Bedroom 3 = 12'-2" x 11' / 3.7 x 3.4m

Living/Kitchen = 42'-9" x 24'-6" / 13.0 x 7.5m



- KEY:
- C Cupboard
 - U Utility Cupboard
 - W Fitted Wardrobe
 - W/W Walk in Wardrobe

THESE DRAWINGS ARE FOR MARKETING PURPOSES ONLY.
FINAL LOCATION AND SET-OUTS TO BE CONFIRMED
DURING CONSTRUCTION PHASE.

FOR INFORMATION ONLY
NOT FOR CONSTRUCTION

Notes:
Measurements are the maximum room dimensions .
Floor layouts are subject to change at any time.
These drawings are for marketing purposes only