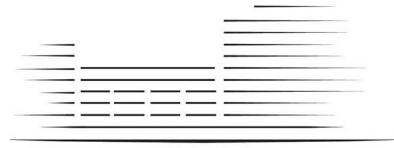


LIGHTERMAN TOWERS



CHELSEA ISLAND

2 BEDROOM APARTMENT

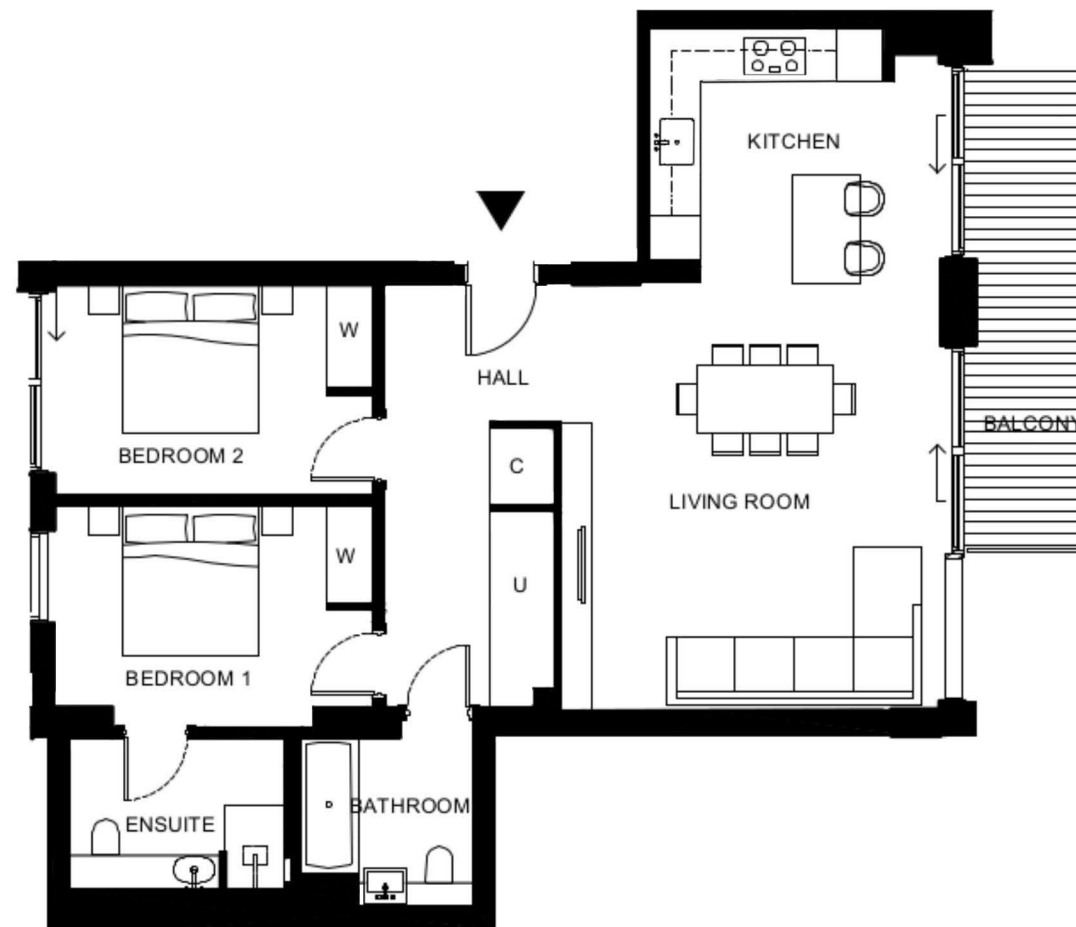
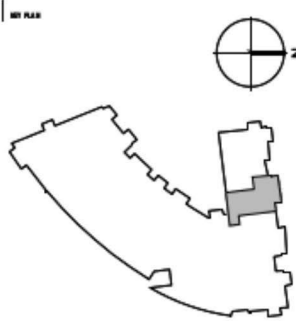
A.12	Level 1	(79)
A.22	Level 2	(81)
A.32	Level 3	(83)
A.42	Level 4	(85)
A.52	Level 5	(87)

Total Gross Internal Area = 1034 sq.ft. / 96 m²

Bedroom 1 = 14'-2" x 9'-8" / 4.3 x 2.9m

Bedroom 2 = 14'-5" x 9'-2" / 4.4 x 2.8m

Living/Kitchen = 29'-8" x 17'-1" / 9.1 x 5.2m



KEY:
C Cupboard
U Utility Cupboard
W Fitted Wardrobe
WW Walk in Wardrobe

THESE DRAWINGS ARE FOR MARKETING PURPOSES ONLY.
FINAL LOCATION AND SET-OUTS TO BE CONFIRMED
DURING CONSTRUCTION PHASE.

FOR INFORMATION ONLY
NOT FOR CONSTRUCTION

Notes:
Measurements are the maximum room dimensions.
Floor layouts are subject to change at any time.
These drawings are for marketing purposes only