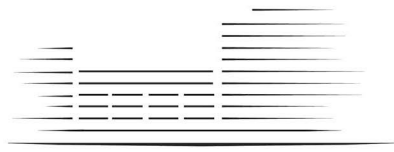


LIGHTERMAN TOWERS



CHELSEA ISLAND

2 BEDROOM APARTMENT

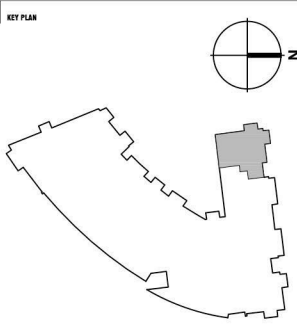
- A.11 Level 1 (78)
- A.21 Level 2 (80)
- A.31 Level 3 (82)
- A.41 Level 4 (84)
- A.51 Level 5 (86)

Total Gross Internal Area = 1225 sq.ft. / 114 m²

Bedroom 1 = 15'-9" x 12'-5" / 4.8 x 3.8m

Bedroom 2 = 14'-1" x 10'-9" / 4.3 x 3.3m

Living/Kitchen = 26'-9" x 26' / 8.2 x 7.9m



KEY:

- C Cupboard
- U Utility Cupboard
- W Fitted Wardrobe
- WIW Walk in Wardrobe

THESE DRAWINGS ARE FOR MARKETING PURPOSES ONLY.
FINAL LOCATION AND SET-OUTS TO BE CONFIRMED
DURING CONSTRUCTION PHASE.

FOR INFORMATION ONLY
NOT FOR CONSTRUCTION

Notes:

Measurements are the maximum room dimensions .
Floor layouts are subject to change at any time.
These drawings are for marketing purposes only