

LIGHTERMAN TOWERS



CHELSEA ISLAND

3 BEDROOM APARTMENT

C.62 Level 6 (31)

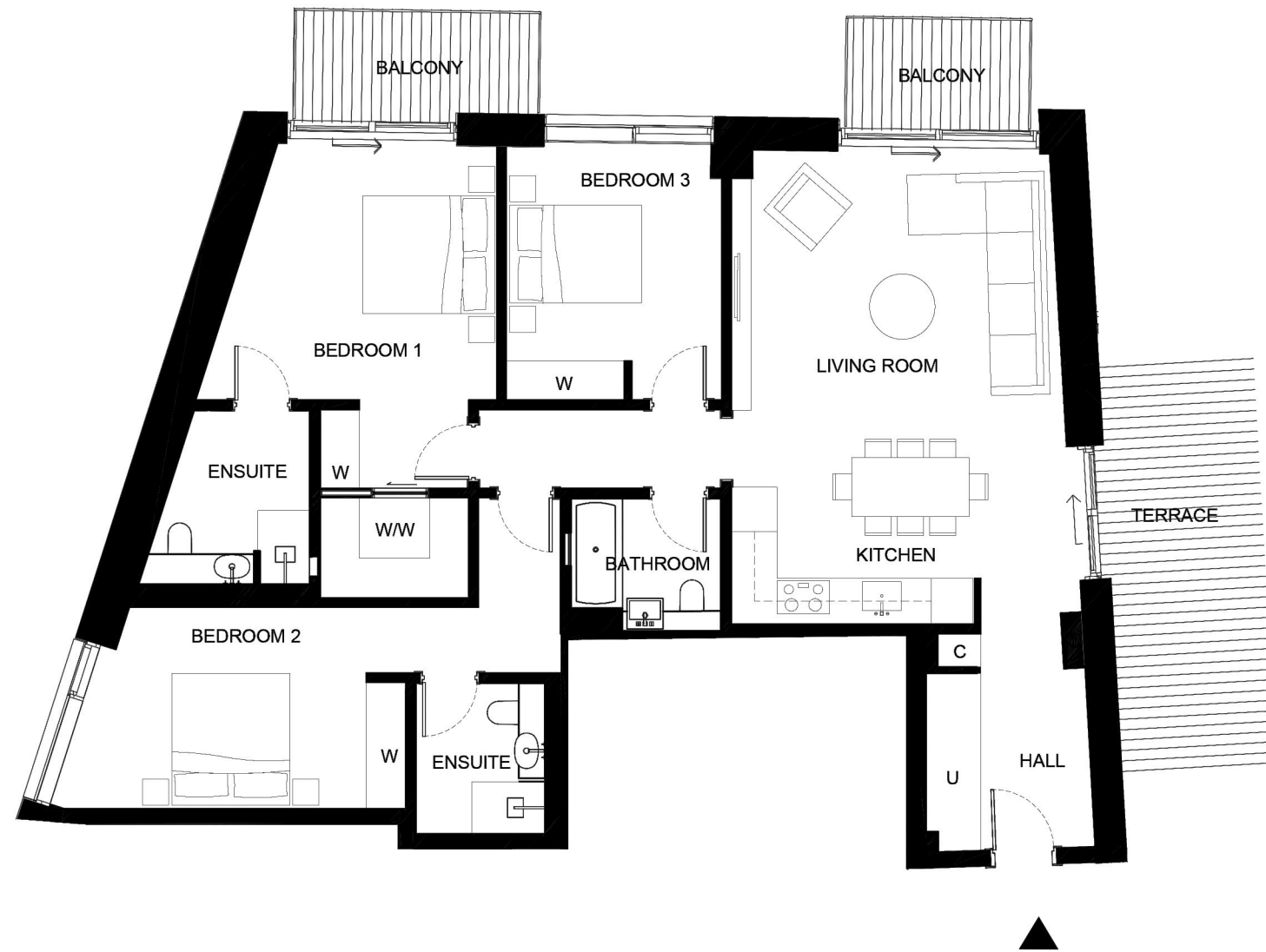
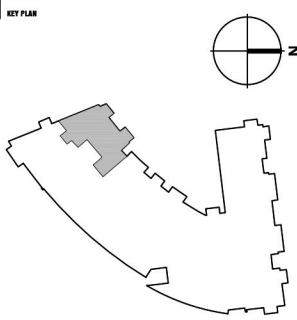
Total Gross Internal Area = 1395 sq.ft / 130 m²

Bedroom 1 = 15'-1" x 13'-6" / 4.6 x 4.1m

Bedroom 2 = 17'-10" x 10'-1" / 5.4 x 3.1m

Bedroom 3 = 12'-10" x 10'-10" / 3.9 x 3.3m

Living/Kitchen = 24'-4" x 17'-6" / 7.4 x 5.3m



KEY:

- C Cupboard
- U Utility Cupboard
- W Fitted Wardrobe
- WIW Walk in Wardrobe

THESE DRAWINGS ARE FOR MARKETING PURPOSES ONLY.
FINAL LOCATION AND SET-OUTS TO BE CONFIRMED
DURING CONSTRUCTION PHASE.

FOR INFORMATION ONLY
NOT FOR CONSTRUCTION

Notes:

Measurements are the maximum room dimensions .
Floor layouts are subject to change at any time.
These drawings are for marketing purposes only