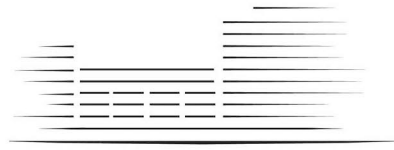


# LIGHTERMAN TOWERS



# CHELSEA ISLAND

## 3 BEDROOM PENTHOUSE

Penthouse 1 Level 7

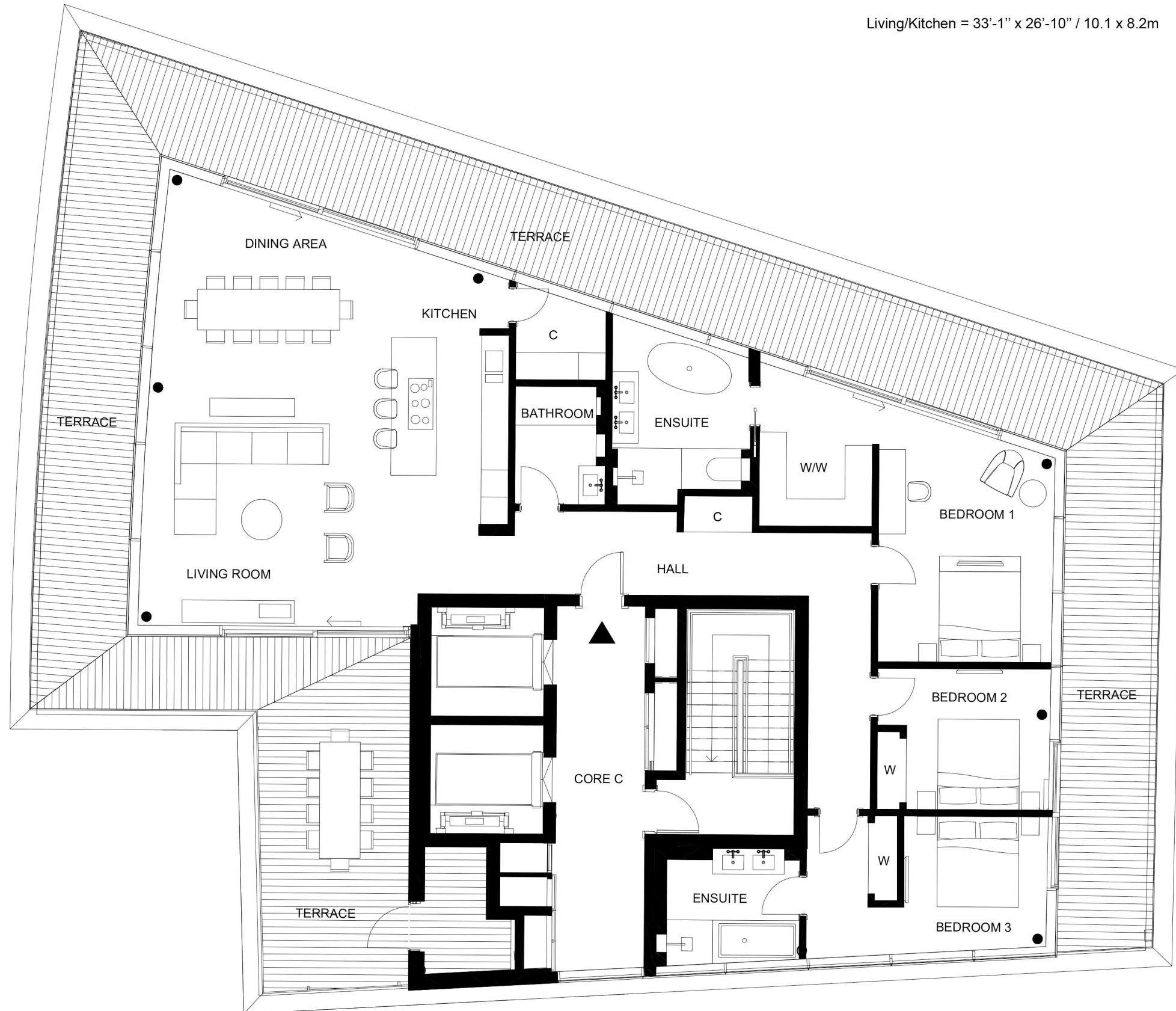
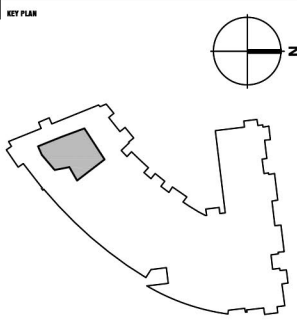
Total Gross Internal Area = 1994 sq.ft. / 185 m<sup>2</sup>

Bedroom 1 = 18'-11" x 12'-10" / 5.8 x 3.9m

Bedroom 2 = 12'-8" x 10'-3" / 3.9 x 3.1m

Bedroom 3 = 10'-6" x 10' / 3.2 x 3.0m

Living/Kitchen = 33'-1" x 26'-10" / 10.1 x 8.2m



KEY:

- C Cupboard
- U Utility Cupboard
- W Fitted Wardrobe
- W/W Walk in Wardrobe

THESE DRAWINGS ARE FOR MARKETING PURPOSES ONLY.  
FINAL LOCATION AND SET-OUTS TO BE CONFIRMED  
DURING CONSTRUCTION PHASE.

FOR INFORMATION ONLY  
NOT FOR CONSTRUCTION

**Notes:**

Measurements are the maximum room dimensions .  
Floor layouts are subject to change at any time.  
These drawings are for marketing purposes only