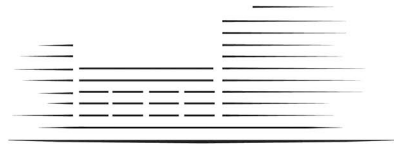


# LIGHTERMAN TOWERS



# CHELSEA ISLAND

## 2 BEDROOM APARTMENT

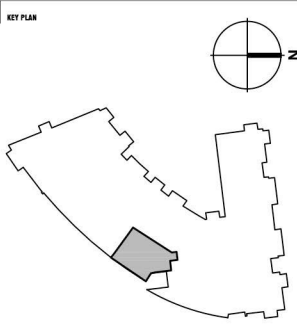
- B.17 Level 1 (38)
- B.27 Level 2 (45)
- B.37 Level 3 (52)

Total Gross Internal Area = 1267 sq.ft. / 118 m2

Bedroom 1 = 18'-8" x 12'-10" / 5.7 x 3.9m

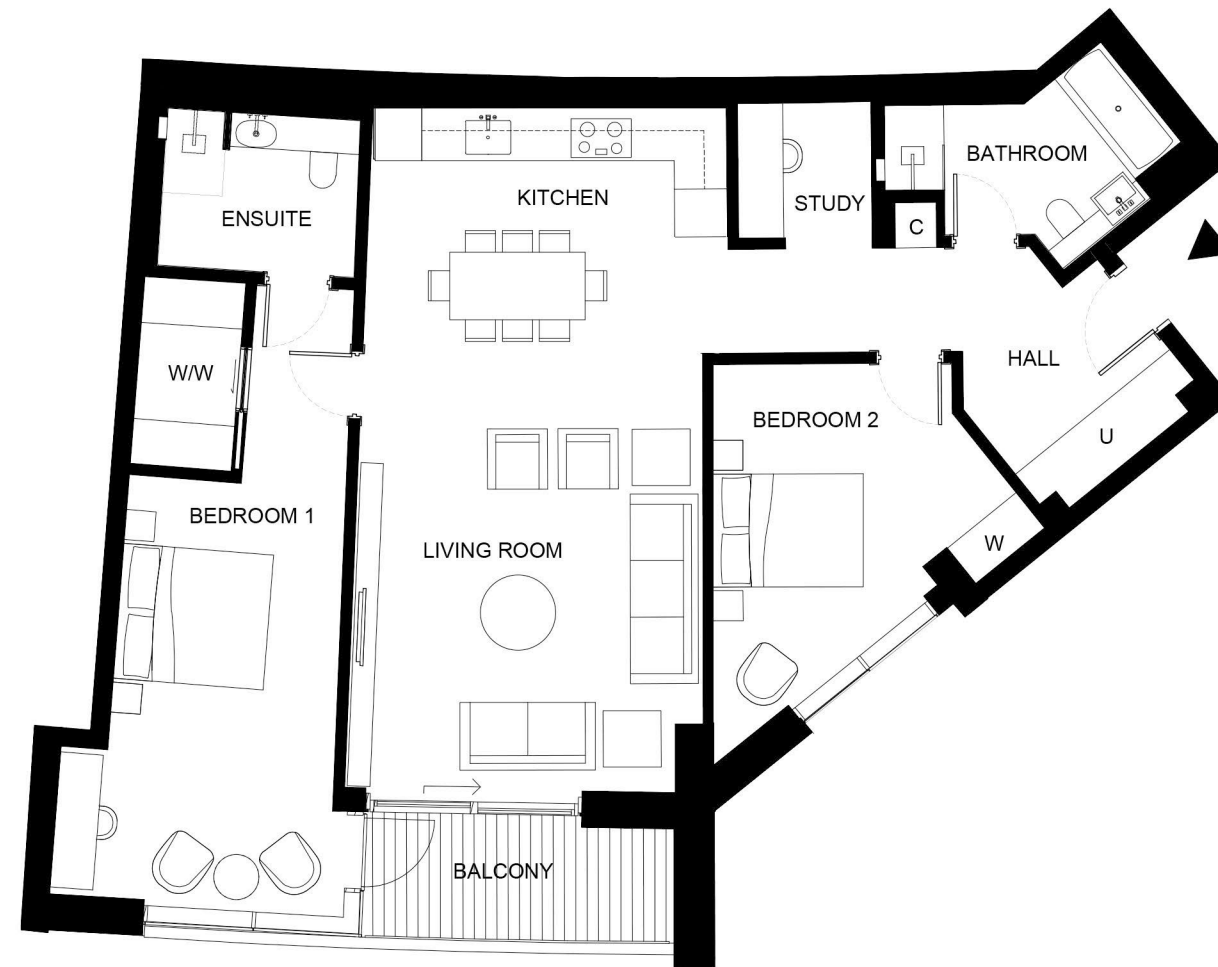
Bedroom 2 = 17'-6" x 14'-5" / 5.3 x 4.4m

Living/Kitchen = 30'-4" x 14'-5" / 9.2 x 4.4m



### KEY:

- C Cupboard
- U Utility Cupboard
- W Fitted Wardrobe
- WIW Walk in Wardrobe



Notes:  
Measurements are the maximum room dimensions .  
Floor layouts are subject to change at any time.  
These drawings are for marketing purposes only

THESE DRAWINGS ARE FOR MARKETING PURPOSES ONLY.  
FINAL LOCATION AND SET-OUTS TO BE CONFIRMED  
DURING CONSTRUCTION PHASE.

FOR INFORMATION ONLY  
NOT FOR CONSTRUCTION