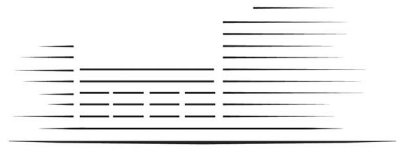


# LIGHTERMAN TOWERS



# CHELSEA ISLAND

## 2 BEDROOM APARTMENT

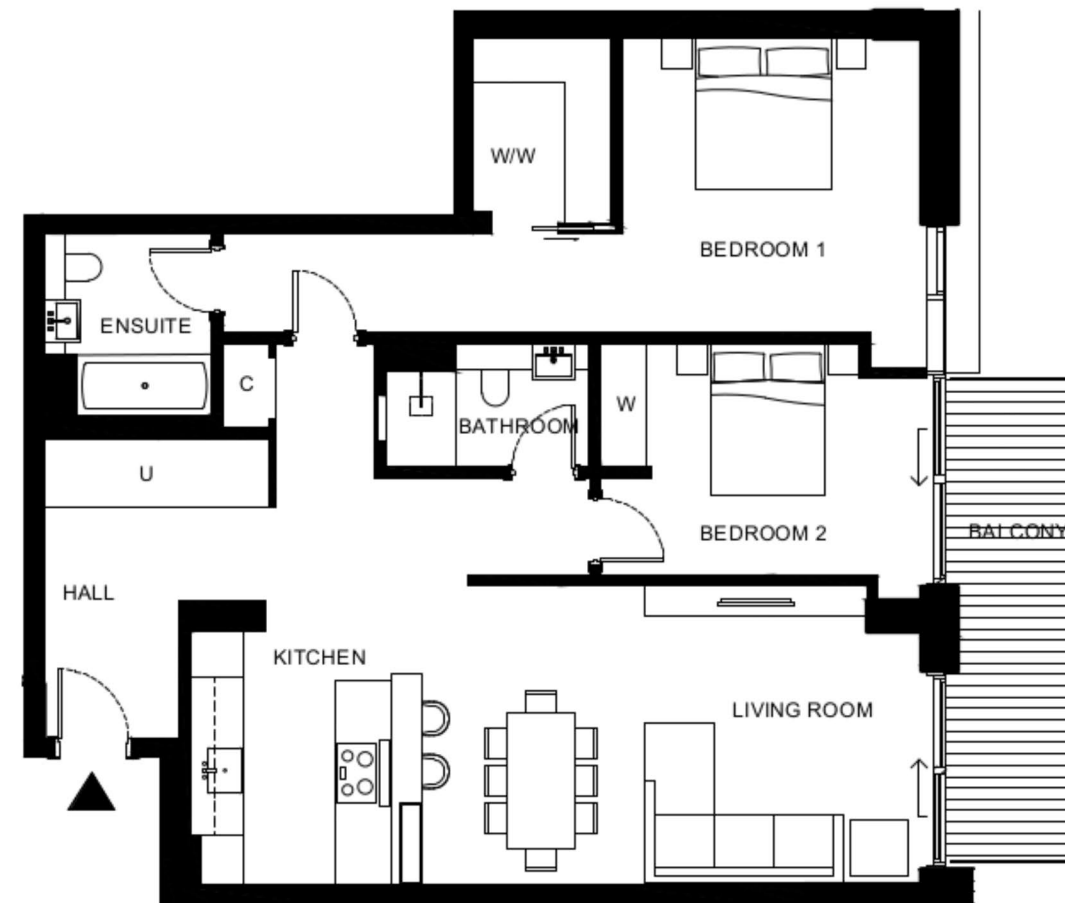
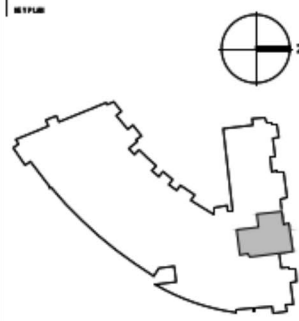
- B.13 Level 1 (34)
- B.23 Level 2 (41)
- B.33 Level 3 (48)

Total Gross Internal Area = 1207 sq.ft. /112 m2

Bedroom 1 = 13'-3" x 12'-10" / 4.0 x 3.9m

Bedroom 2 = 14'-5" x 10' / 4.4 x 3.0m

Living/Kitchen = 32'-3" x 13' / 9.8 x 3.9m



- KEY:
- C Cupboard
  - U Utility Cupboard
  - W Fitted Wardrobe
  - W/W Walk in Wardrobe

THESE DRAWINGS ARE FOR MARKETING PURPOSES ONLY. FINAL LOCATION AND SET-OUTS TO BE CONFIRMED DURING CONSTRUCTION PHASE.

FOR INFORMATION ONLY  
NOT FOR CONSTRUCTION

Notes:  
Measurements are the maximum room dimensions .  
Floor layouts are subject to change at any time.  
These drawings are for marketing purposes only