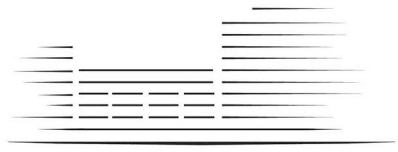


# LIGHTERMAN TOWERS



# CHELSEA ISLAND

## 3 BEDROOM APARTMENT

- B.44 Level 4 (56)
- B.54 Level 5 (62)
- B.63 Level 6 (67)
- B.72 Level 7 (70)
- B.82 Level 8 (73)

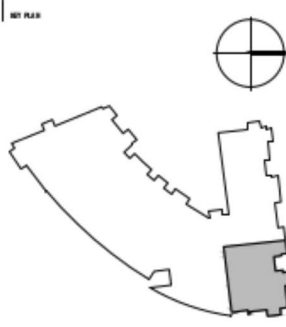
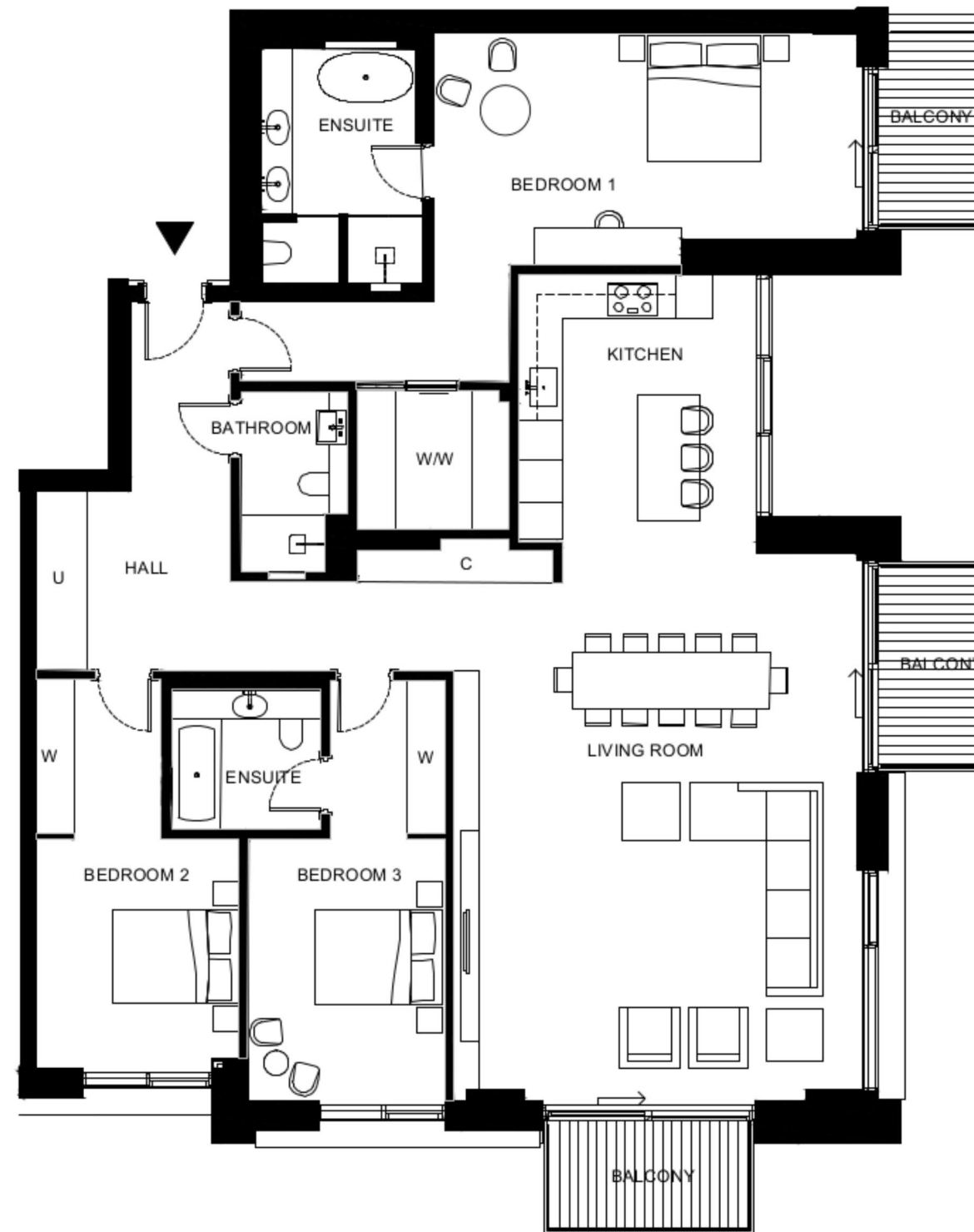
Total Gross Internal Area = 2113 sq.ft. / 196 m<sup>2</sup>

Bedroom 1 = 22'-9" x 12'-2" / 6.9 x 3.7m

Bedroom 2 = 12'-3" x 10'-7" / 3.7 x 3.2m

Bedroom 3 = 13'-11" x 10'-3" / 4.2 x 3.1m

Living/Kitchen = 43'-10" x 21'-5" / 13.4 x 6.5m



- KEY:
- C Cupboard
  - U Utility Cupboard
  - W Filled Wardrobe
  - WW Walk in Wardrobe

THESE DRAWINGS ARE FOR MARKETING PURPOSES ONLY.  
FINAL LOCATION AND SET-OUTS TO BE CONFIRMED  
DURING CONSTRUCTION PHASE.

MARKETING PLAN ONLY  
NOT FOR CONSTRUCTION

Notes:  
Measurements are the maximum room dimensions.  
Floor layouts are subject to change at any time.  
These drawings are for marketing purposes only