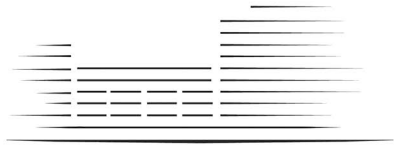


# LIGHTERMAN TOWERS



# CHELSEA ISLAND

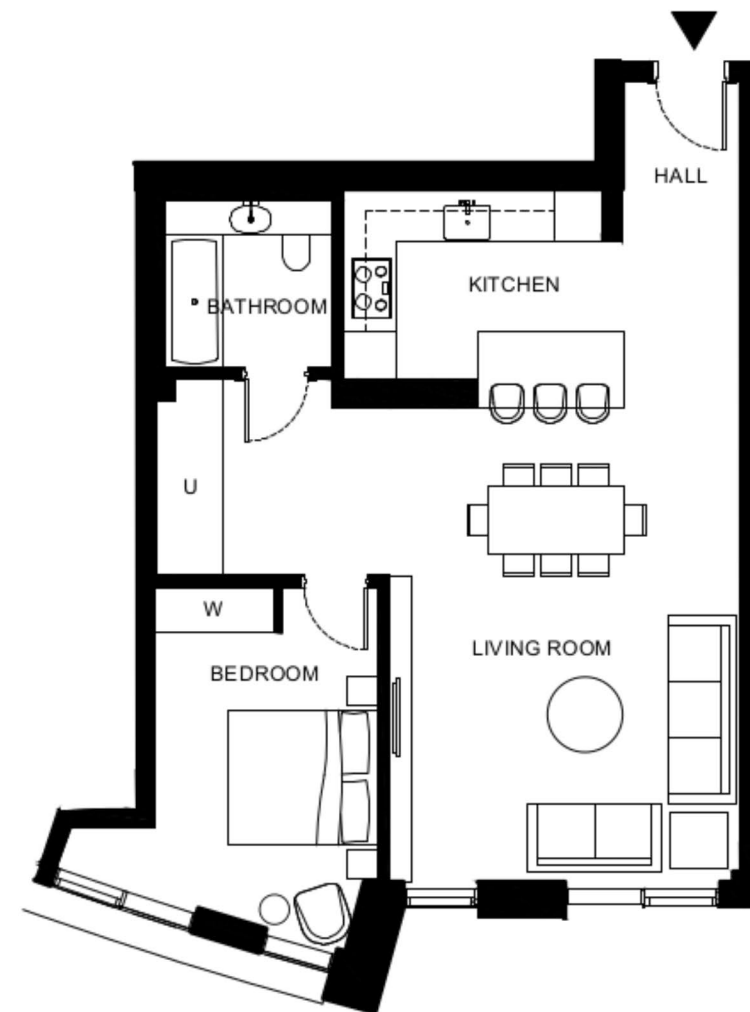
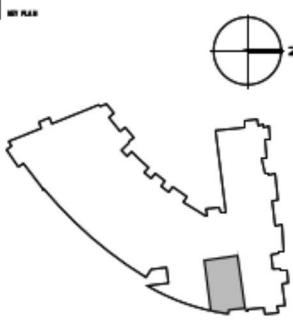
## 1 BEDROOM APARTMENT

B.15 Level 1 (36)  
B.25 Level 2 (43)

Total Gross Internal Area = 825 sq.ft. / 77m<sup>2</sup>

Bedroom = 16' x 9'-9" / 4.9m x 3.0m

Living/Kitchen = 30'-6" x 17'-3" / 9.3 x 5.3m



KEY:  
C Cupboard  
U Utility Cupboard  
W Filled Wardrobe  
WW Walk in Wardrobe

THESE DRAWINGS ARE FOR MARKETING PURPOSES ONLY.  
FINAL LOCATION AND SET-OUTS TO BE CONFIRMED  
DURING CONSTRUCTION PHASE.

FOR INFORMATION ONLY  
NOT FOR CONSTRUCTION

Notes:  
Measurements are the maximum room dimensions.  
Floor layouts are subject to change at any time.  
These drawings are for marketing purposes only