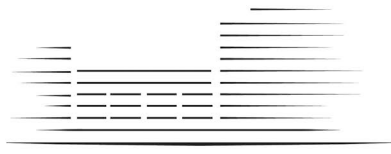


LIGHTERMAN TOWERS



CHELSEA ISLAND

2 BEDROOM APARTMENT

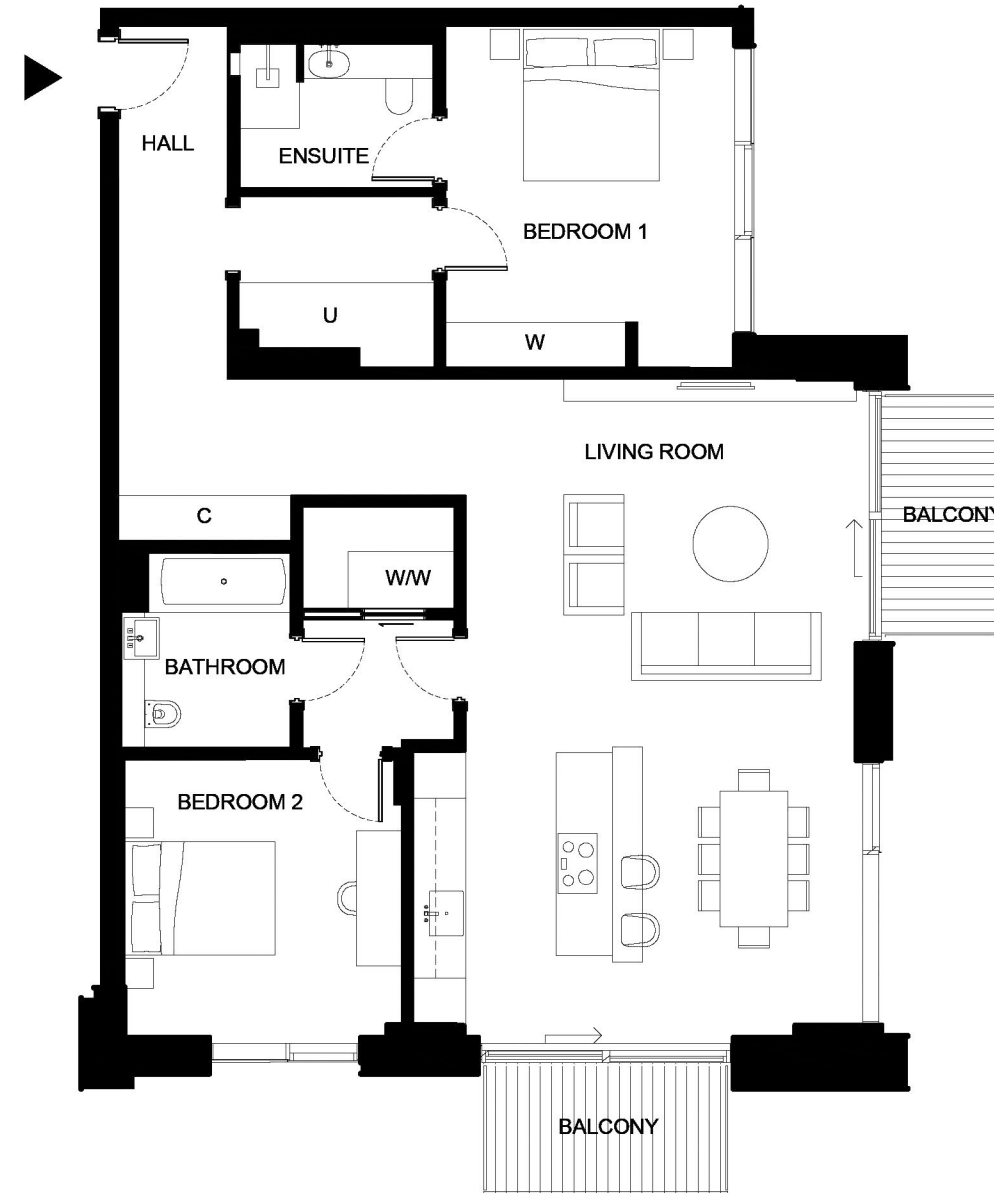
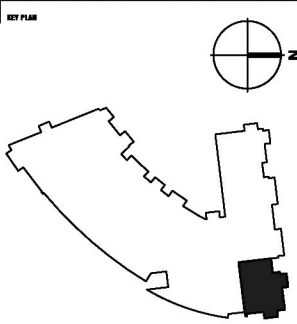
- B.14 Level 1 (35)
- B.24 Level 2 (42)
- B.34 Level 3 (49)

Total Gross Internal Area = 1343 sq.ft / 125m²

Bedroom 1 = 14'-10" x 12'-7" / 4.5 x 3.8m

Bedroom 2 = 12'-5" x 12'-1" / 3.8 x 3.7m

Living/Kitchen = 29' x 19'-7" / 8.8 x 6.0m



- KEY:
- C Cupboard
 - U Utility Cupboard
 - W Fitted Wardrobe
 - WW Walk in Wardrobe

THESE DRAWINGS ARE FOR MARKETING PURPOSES ONLY.
FINAL LOCATION AND SET-OUTS TO BE CONFIRMED
DURING CONSTRUCTION PHASE.

MARKETING PLAN ONLY
NOT FOR CONSTRUCTION

Notes:
Measurements are the maximum room dimensions .
Floor layouts are subject to change at any time.
These drawings are for marketing purposes only